

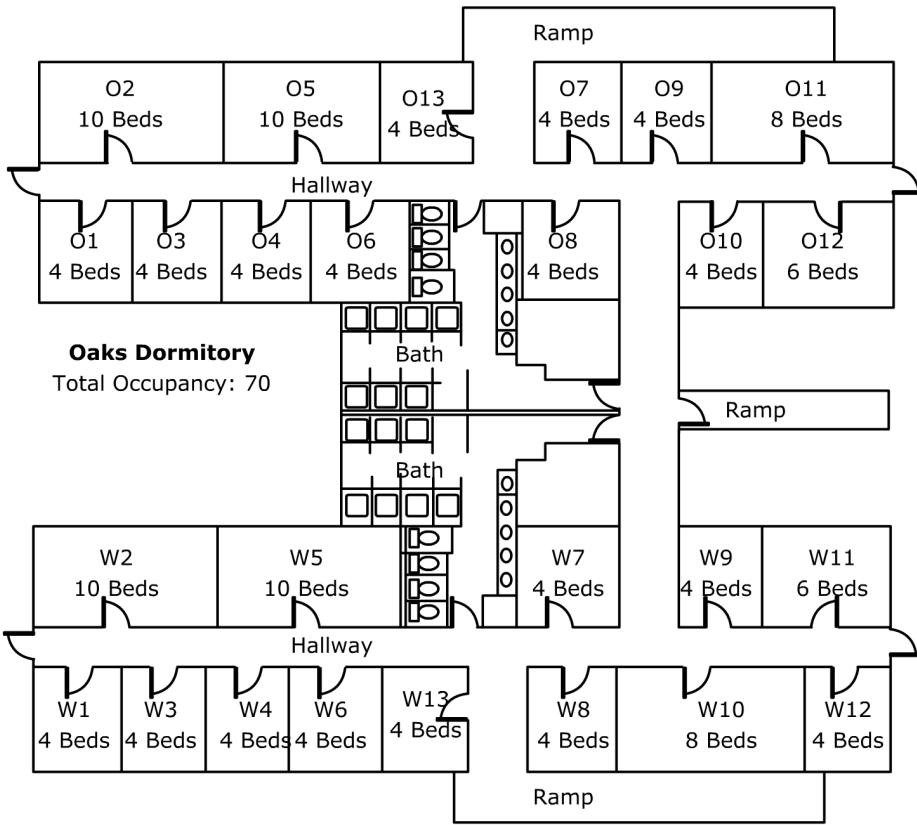
# Camp Shadow Pines Dormitory Map

(rev. Dec 2009)

## Nurses Station (not shown)

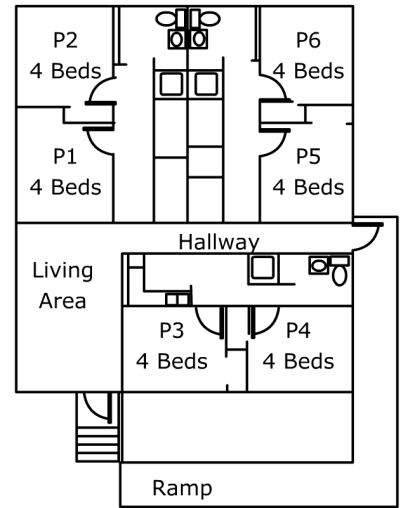
Occupancy: 2

NOTE: All beds are bunk beds unless otherwise noted.

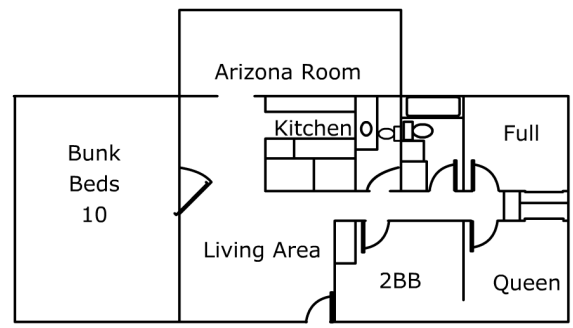


**Oaks Dormitory**  
Total Occupancy: 70

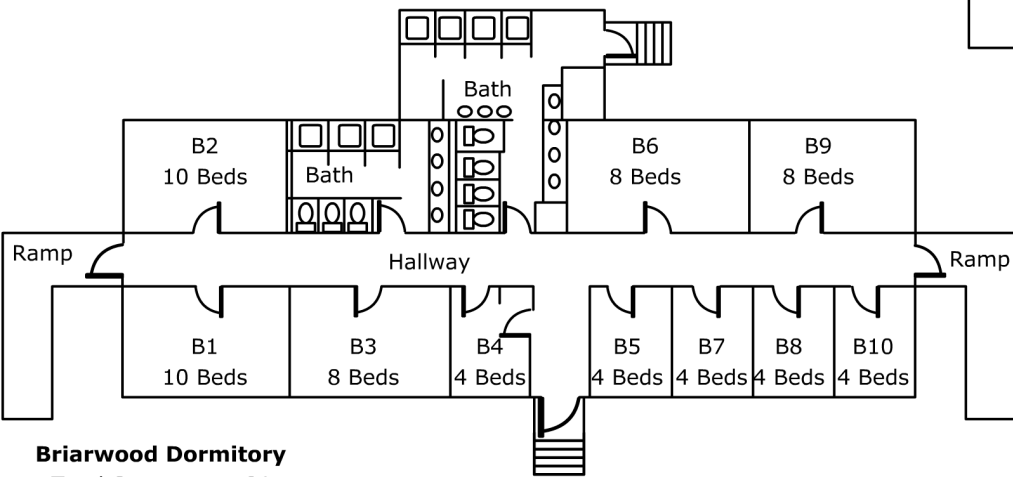
**Woodleaf Dormitory**  
Total Occupancy: 70



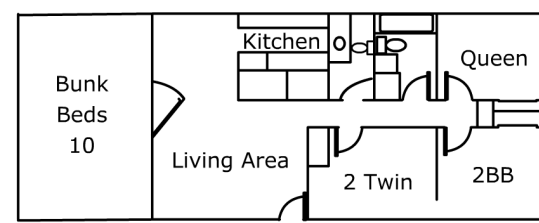
**Pines Dormitory**  
Total Occupancy: 24



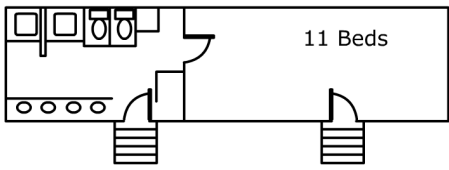
**Kiva**  
Occupancy: 20



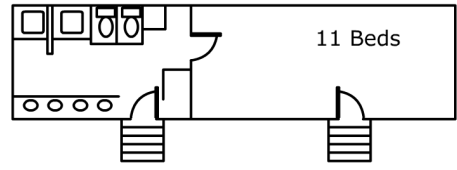
**Briarwood Dormitory**  
Total Occupancy: 64



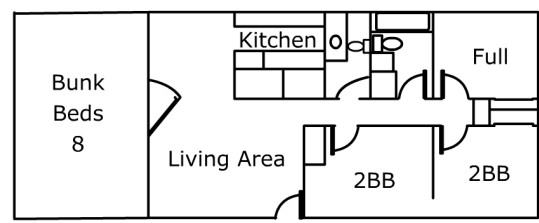
**Zuni**  
Occupancy: 18



**Cedar Modular**  
Total Occupancy: 11



**Pinon Modular**  
Total Occupancy: 11



**Hopi**  
Occupancy: 18